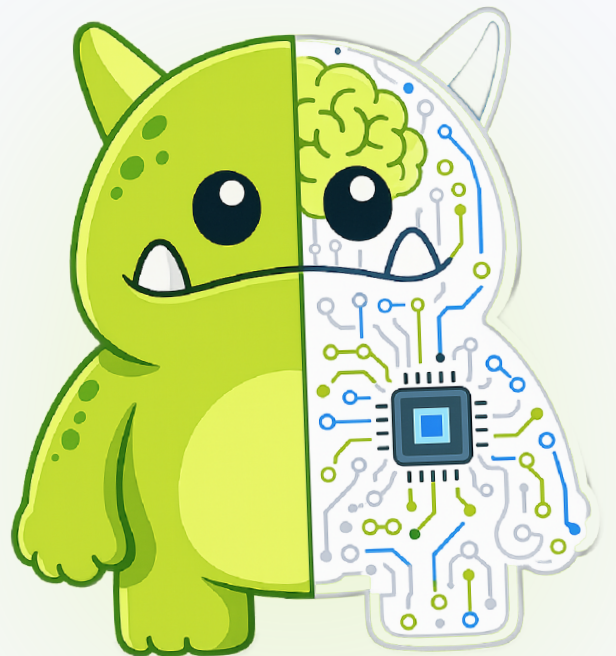


CHAPTER 10

# The Organizational Digital Twin

Leaders need a living model of how work actually happens.



OPENING PREMISE

# Every company has an official version of how work happens.

**The org chart.**

**The process manual.**

**The quarterly deck.**

**The meeting notes.**

**Then there is reality.**

The gap is where execution breaks.

CORE ARGUMENT

# An Organizational Digital Twin models the real operating system.

Who owns what. Which decisions are made where. Which commitments are open. Which KPIs are drifting. Which agents are watching. Which lessons have changed behavior.

The twin lets leaders inspect the company as it operates, not only as it reports.

It makes operating reality visible.

EXECUTIVE INSIGHT

# Most companies discover reality through escalation.

The customer complains. The project slips. The number misses. The leader asks what happened.

The team reconstructs the truth after the fact.

A digital twin changes the timing.

ORIGINAL FRAMEWORK

# The Digital Twin of Work

## Role map

Human and agent seats.

## Decision map

Where decisions are made and recorded.

## Commitment map

Open promises, owners, and due dates.

## KPI map

Results, targets, thresholds, and trend signals.

## Learning map

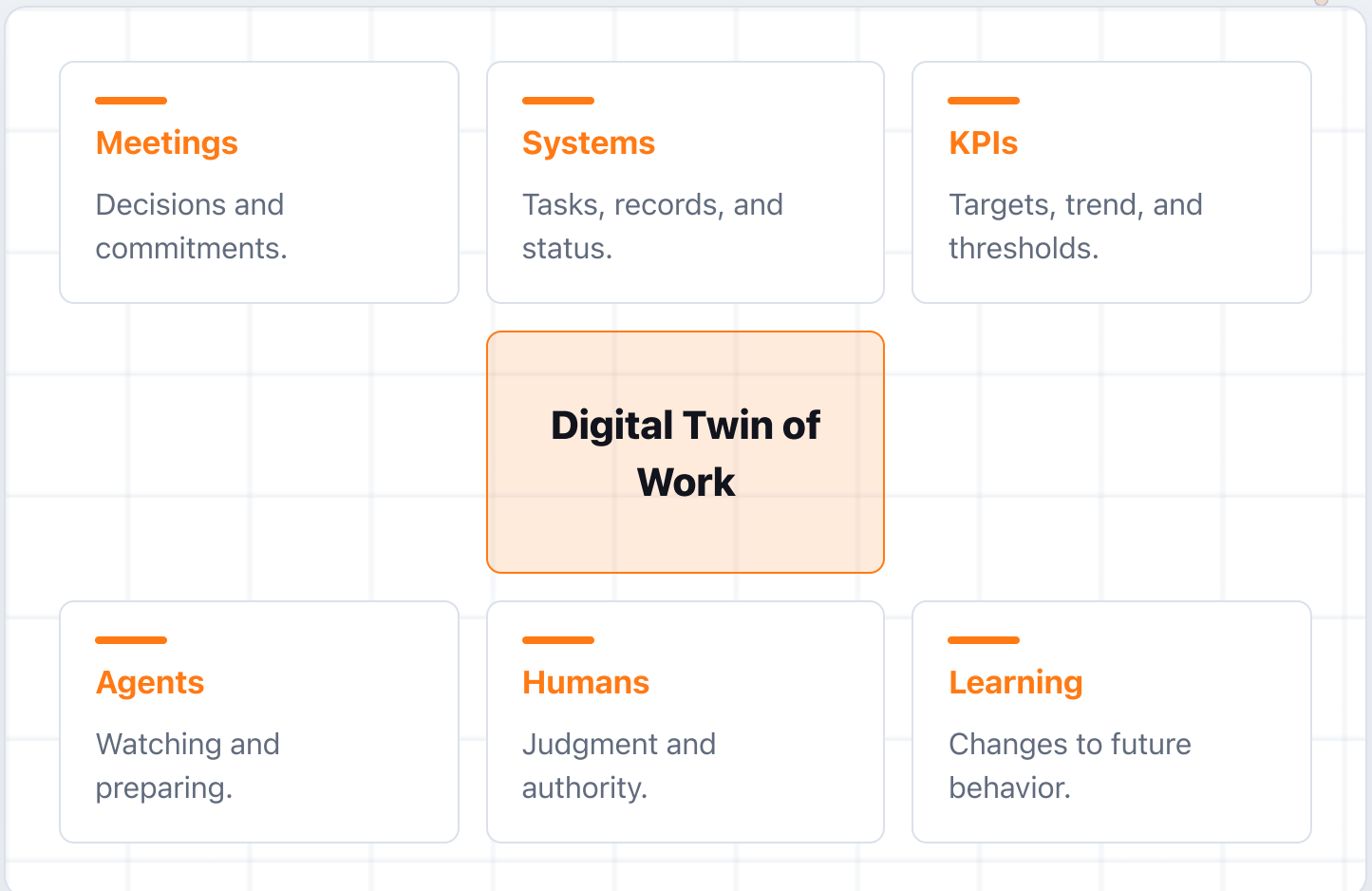
Lessons captured, reused, and retired.

## Drift map

Where reality has moved away from the plan.

Together, these maps reveal whether the company is aligned in reality or only in language.

# The twin connects real work signals to a shared operating model.



The org chart shows who reports to whom. The digital twin shows how the company works.

# 01

## VISIBILITY

# The twin is not surveillance.

### Surveillance

Watch people.

### Visibility

Catch drift before it becomes damage.

The goal is not to catch people. The goal is to catch the operating system moving out of alignment.

# 02

## DRIFT

# Drift is easiest to fix while it is still small.

### Late

A missed number forces a reconstruction.

### Early

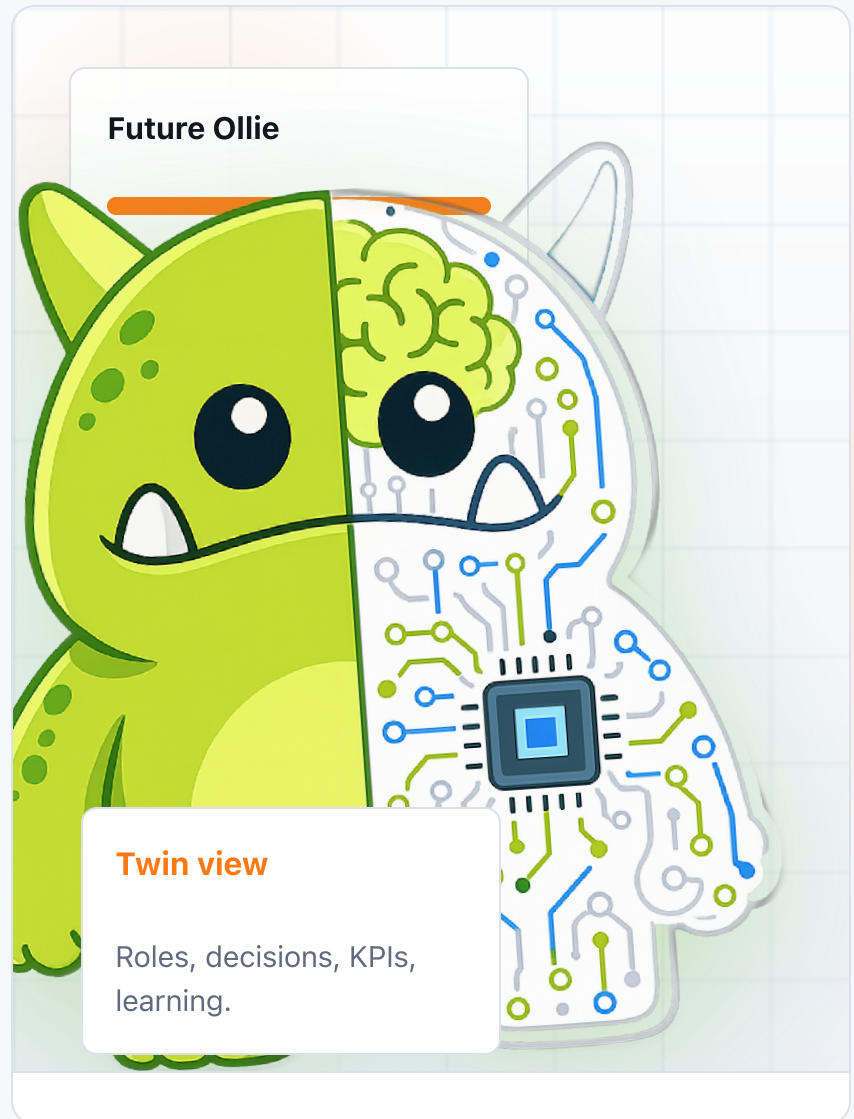
A pattern triggers review before escalation.

The digital twin helps leadership see movement before it becomes a fire.

# Future Ollie stands between the company and its twin.

Not as controller.

As translator between work signals, leadership judgment, and the operating model.



# Use the twin to inspect where work is drifting.

01

Ownership is unclear.

02

Decisions lack records.

03

Commitments lack due dates.

04

KPIs lack owners.

05

Agents lack authority.

06

Lessons never become system changes.

This is organizational visibility.

PRACTICAL IMPLICATION

# Leaders already build mental models of the company.

## Private model

The leader carries reality in their head.

## Shared model

The company can inspect reality together.

The Intelligent Organization makes the model current and accountable.

CLOSING

# **The digital twin shows how the company works.**

Not how the deck says it works.

Not how the process manual hoped it would work.

Reality becomes manageable when reality  
becomes visible.